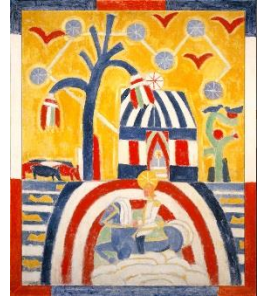


Spotlight 2015-16

Marsden Hartley, *Portrait Arrangement*, 1914



Discussion Questions

Looking Closely

1. Make a list of everything you see in the painting. Does your class disagree on any of the objects?
2. Where did he use realistic colors and imagined colors?
3. Look at the locations of the different colors. Why did Hartley use colors in the places where he did? Can you find any patterns?
4. How did Hartley divide the canvas? Is there anything special about where he placed certain objects?

Finding Meaning

1. The Berlin Paintings correspond with Hartley's friendship with Karl von Freyburg, a German officer killed in the first months of World War II. Do you think Hartley painted this painting before or after his friend's death? Defend your answer with evidence found in the painting.
2. The title of the painting is *Portrait Arrangement*. Why did you think he chose this name and not Portrait of Karl von Freyburg?
3. Considering the painting's history, what objects could be symbols? What do they symbolize?
4. Compare *Portrait Arrangement* with other Berlin Paintings. What components does Hartley retain and what changes? Print out copies of the paintings and place them in the order in which you think they were made.
5. Study the art movements that influenced Hartley: The Blue Rider, Die Brücke, Orphism/Synchromism, and German and Native American folk art. What does he visually borrow from each of these genres?